



# STRIA.TECH

Your Experts for Neuroscience Testing Tools



# acuisee

Behavioral Vision Testing Made Simple

[www.stria.tech/acuisee](http://www.stria.tech/acuisee)

?



## What Is Visual Acuity?

Visual acuity is the threshold of our ability to recognize objects of decreasing size (spatial resolution) or differences in luminance between objects (contrast sensitivity). Improvement or maintenance of visual acuity in humans is the standard to which ocular therapies are held in order to demonstrate efficacy and safety in patients. In humans, visual acuity is tested using an eye chart. In animals it is much more difficult to test. Several methods have attempted to find visual acuity in animals, but there has been a large variation in results and a lot of wasted time and money. Until now...

## What We Do At AcuiSee

AcuiSee is forging the way in providing visual acuity testing for laboratory animals through research and technical expertise. Our devices are ideal for users new to visual testing, or experienced users looking for an accurate and easy to use method for measuring visual acuity.



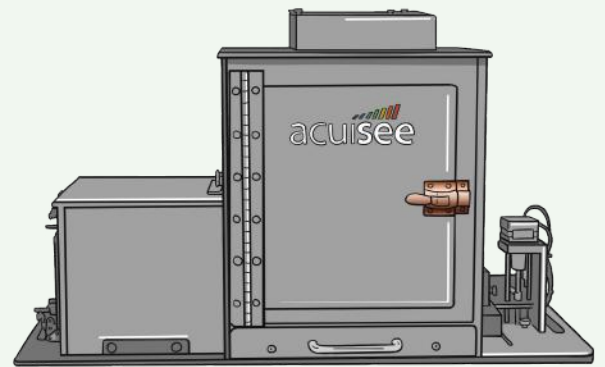
## Why Choose AcuiSee?

- We provide a state-of-the-art solution for obtaining an accurate visual acuity reading in animals.
- Our devices require very little technician involvement, resulting in little to no human error. Using the device is as simple as weighing the animal, putting them in the chamber and walking away. Only basic animal handling skills are required to use our devices, and animal care personal can focus on other tasks while the animal does all the work in the AcuiSee box.
- We offer high-throughput and low-labor for large studies, as well as GLP compliance for safety and toxicological evaluations.
- We always maintain a fair and competitive pricing system.



## How The System Works

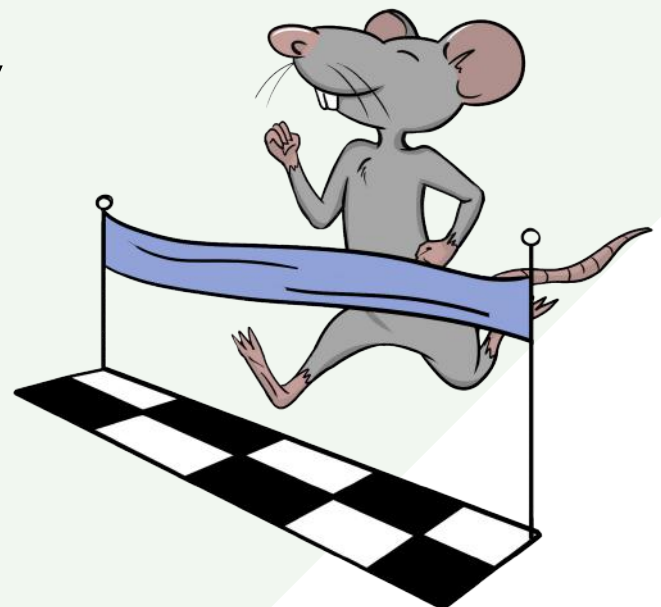
Organizations are supplied with one or more of our vision chambers, and a specialized technician tablet with the AcuiSee Suite software. The software can control multiple devices at a time. This allows a single technician to operate multiple chambers while having time to perform other tasks while the animal works independently in the chamber without oversight.



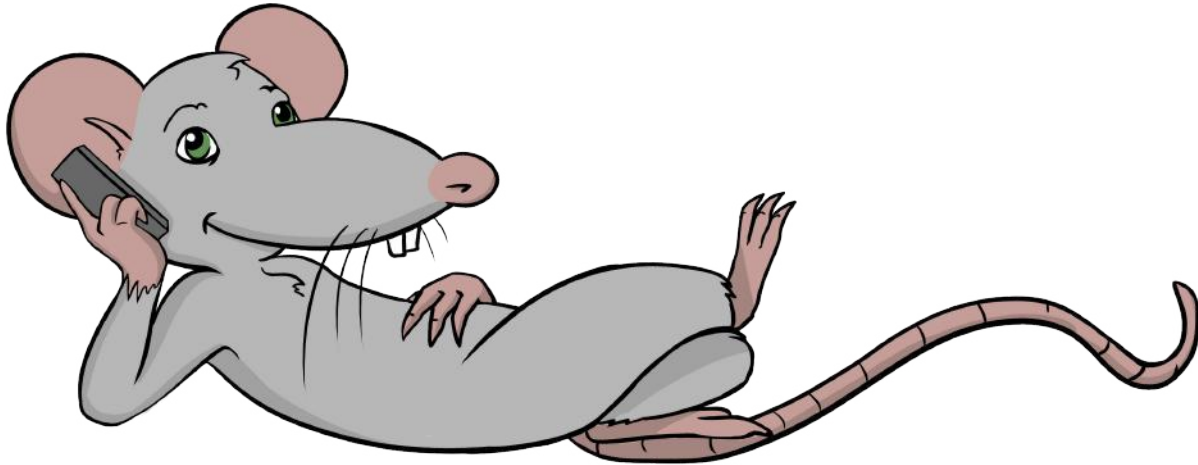
After some simple food restriction to motivate the animals to explore, they progress through acclimation to the chamber and training to the visual task while the technician monitors behavior remotely. While training consists of two 35-60 minute sessions per day per animal, very little interaction is required by the technician. Animals access two touch panels to interact with the system and a liquid food reward is given for every correct response. Most animals reach criteria in 10-14 days, while a few take longer.



Once trained, animals can be evaluated for visual acuity (spatial density threshold) as well as contrast sensitivity. Testing is similar to reading an eye chart, as the animal identifies the correct image, the next image gets harder to discriminate until multiple errors occur, which equates to visual threshold.



# Contact us!



Let us know if you have any questions or would like a quote

Striatech GmbH  
Vor dem Kreuzberg 17  
72070 Tübingen  
Germany

☎ +49 7071 53 913 - 0  
✉ [info@stria.tech](mailto:info@stria.tech)  
🌐 [www.stria.tech](http://www.stria.tech)



[www.stria.tech/acuisee](http://www.stria.tech/acuisee)